

ERMAK[®]
Sheet Metal Working Machinery

www.ermaksan.com.tr



CNC Punch Pres **FPP**



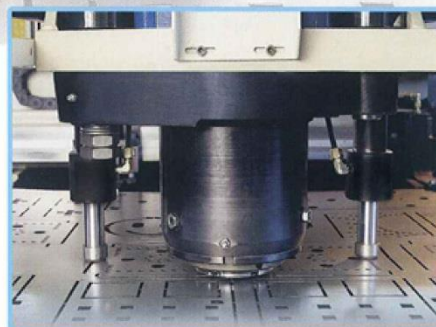
NEW GENERATION PUNCH PRES



BOTTOM AND TOP TOOL SYSTEM

Sensitive and durable ERMAK-BIEMMETI brand standard sextet multi tool or thick turret D station or octet multi tool is used at bottom and top tool system.

Trio, quartet, fivefold, sextet and octet multi tools, B, C and D type stations, Wilson tools single can be adapted to the machine and are available upon request. Many operations are possible to make as special for stainless steel sheets processing, forming with functional tools, perforating various diameters and special evacuating.



CNC PUNCHPRESS

FPP series manufactured by ERMAKSAN's proved quality and experience on production of sheet metal workbenches is being presented to the utility of our clients open to technology and continual innovation. Strong mono block rigid C type body built up by stress relieved welded steel construction has high acceleration axes and designed to allow sheet loading from 3 sides ergonomically and the operation to be watched easily. Sheet processing can be done multi-directional and flexible until 6 mm thickness on ERMAK Punch Press. Hydraulic, electronic, electric and mechanic components that are respected with its high quality worldwide have been used on the machine.





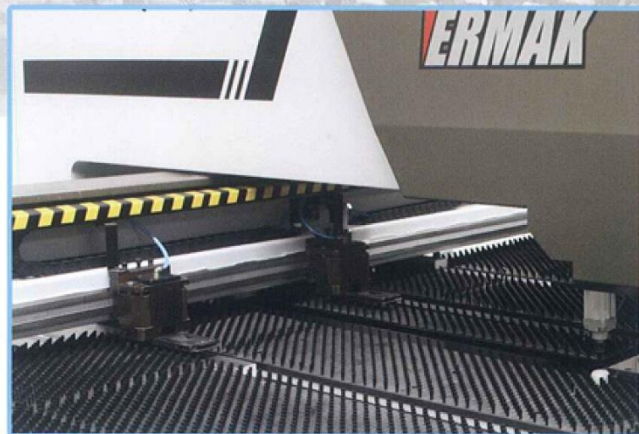
CNC CONTROLLER

GE Fanuc series 18i-PB controller has 10,4" color LCD screen, 512 KB part program memory, all related punch functions, program transfer availability with PCMCIA and ETHERNET, worldwide Fanuc Service advantage is being used on this machine.

Ergonomically designed control panel can be moved around machine easily. Protective UPS (Power Source) is included for electricity cut off and voltage undulation.

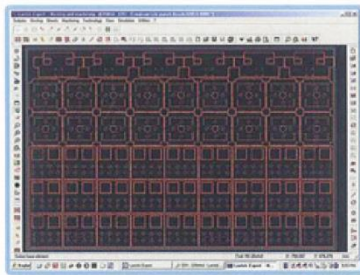
SHEET HOLDERS

Automatic repositioning to process sheets long than 2000 mm. Two pieces of sheet holder clamp opens with spring tension and tightens with pneumatic is being used on the machine. Sheet is pinched without causing any deformation to provide sensitive processing. Moreover pneumatic sheet referencing bar and CAD/CAM controlled pneumatic trap to drop the cut part to the wheeled part box.



Lantek Lite Punch OFFERS THE MOST PRODUCTIVE SOLUTION FOR PROGRAMMING CUTTING MACHINES

This new design is the fourth generation of programs and is the result of Lantek's more than 15 years experience in providing solutions for the sheet metal processing industry.



Easy to learn.

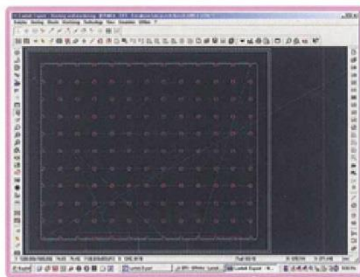
Lantek Expert Punch is designed to reduce learning time to a minimum. Simple, user-friendly menus guide users at all times, enabling them to produce parts from the first day.

Integration.

Integrates part design, nesting and manufacturing technology in just one programme. This integration reduces the time and effort required to generate numerical control programmes.

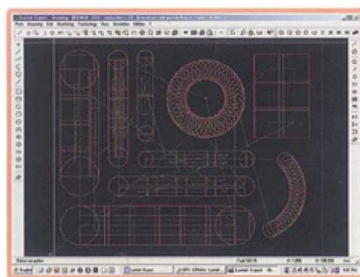
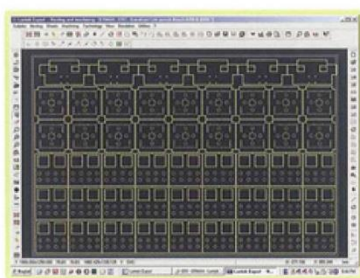
Benefits:

Excellent integration into Lantek Expert III (From Quotation to Invoicing) reduces data entry significantly. Excellent nesting features including best sheet selection reduces scrap. Excellent costing and time calculation including all consumable and raw material, improves efficiency and allows accurate scheduling. Integration into the sheets database allows efficient tracking and control of inventory. Advanced machining options allow for very efficient machining. Fully automatic tooling saves on setup times.



Summary:

2D CAD Module Automatic dimensioning
Parametric Shapes Library Import DXF, DWG Files
Possibility to save the drawing of the nesting in a file with WMF format or with DXF format
Automatic geometry verification and error correction
Manual, automatic & interactive Nesting (collision control)
True-shape Nesting
Nesting for common punching
Interactive technology assignment (manual & automatic)
Standard reports (Factory sheets report, Sheets report, Geometry report, Parts report, Labels report, Time and Cost reports, etc)
Automatic part quantity tracking
Automatic calculation of part area, weight, machining time and cost.
User-definable cost parameters
Automatic processes
Communications
Flexible automatic sequencing options
Common Punching
Automatic tooling
Automatic work-chute management
Automatic micro-joint management
Automatic clamp avoidance control
Automatic repositions
User definable punching macros
Shear Management
Integrated parts database
Integrated Tools and Dies database
Integrated material Database
Automatic plate cropping and remnant creation
Automatic nesting on remnant sheets



FPP 1270-30 TECHNICAL FEATURES

All specs are subject to change without notice

| | | |
|---|---|--|
| MAXIMUM TONNAGE | ton | 30 |
| MAXIMUM CAPACITY (Thickness, X,Y) | mm | 6,35x 1270x2000 |
| MAXIMUM PUNCH DIAMETER (MULTI TOOL) | mm | Ø22 |
| MAXIMUM PUNCH DIAMETER (Sheet is 1 mm Thickness) (SINGLE TOOL) | mm | Ø89,9 |
| MACHINE AXES | - | X, Y, A |
| X AXIS TRAVEL | mm | 2000 + Repos. |
| X AXIS VELOCITY | m/min. | 70 |
| Y AXIS TRAVEL | mm | 1270 |
| Y AXIS VELOCITY | m/min. | 70 |
| A AXIS VELOCITY | m/sec. | 100 |
| X + Y DEPENDENT VELOCITY | m/min. | 99 |
| MAXIMUM PUNCH STROKE | stroke/min. | 900 |
| For Nibbling 5 mm Stroke | | |
| MAXIMUM PUNCH STROKE Per Minute | stroke/min. | 600 |
| For* 1 mm step X Movement, 1 mm step Y axes Movement, 1 mm Sheet thickness | | |
| MAXIMUM PUNCH STROKE Per Minute | stroke/min. | 350 |
| For* 25 mm step X Movement, 25 mm step Y axes Movement, 1 mm Sheet thickness | | |
| POSITION ACCURACY | mm | ± 0,03 |
| POSITION TOLERANCE | mm | ± 0,1 |
| MULTI TOOL CHANGE TIME | sec. | 12 - 15 |
| SHEET WEIGHT FOR MAXIMUM VELOCITY | kg | 25 |
| MOTOR | kW | 15 |
| OIL CAPACITY | lt | 300 |
| MAXIMUM STROKE | mm | 40 |
| SHEET CLAMPING | pieces | 2 |
| SHEET CLAMPING FORCE | kg | 1200 |
| OPERATOR PANEL | - | GE Fanuc 18i-PB 10,4" color LCD screen, 512 kb, PCMCIA ve ETHERNET |
| POSITION CONTROL | - | LVTD, SCHNEIDER |
| SERVO AXES | X,Y | FANUC AC FANUC FSSB INTERFACE |
| WORKING HEIGHT | mm | 950 |
| TABLE DIMENSION | mm | 2450 x 4000 |
| TABLE TYPE | - | brushed |
| MACHINE LENGTH | mm | 4250 |
| MACHINE WIDTH | mm | 4000 |
| MACHINE HEIGHT | mm | 2220 |
| SHIPMENT DIMENSIONS | mm | 2325x4250 |
| WEIGHT | kg | 11000 |
| CAD/CAM Software LANTEK EXPERT Lite PUNCH Standart Manual Nesting (1 pieces soft, 1 pieces dongle) Optional Automatic nesting | license | one license, Postprocessor |
| TOOLING | ERMAK BIEMMETI MULTI TOOL 6 pieces (D stattons) | PUNCH, DIE, STRIPPER Compe (A Stations) Round 8,10,20, Rectangle 4x20 mm (2 pieces), Square 15x15 mm (1 pieces) |
| TABLE | - | |

Consult to our company for special dimension and capacity applied machines



ERMAKSAN MACHINERY

Organize Sanayi Bölgesi Lacivert Cadde No. 6 BURSA / TURKEY Tel: (+90.224) 294 75 00 Fax: (+90.224) 294 75 44
http: www.ermaksan.com.tr e-mail: ermaksan@ermaksan.com.tr